

CC: 2822.8

# BSU GEOPHYSICS VSP OBSERVER'S LOG

Coordinate System Origin at Borehole

Casing Elevation: 860.26m CE = 0.64m above

Azimuth of X-Axis: 90° North

Azimuth of Y-Axis: 0° North

Reference Phone:

Offset:

Azimuth:

Elev. 859.52 0.1m below

X = 0

Y = +4.0

859.62 =

Channel

Configuration:

Borehole Phone

Reference Phone

V=Channel 1

R=Channel 2

T=Channel 3

V=Channel 4

R=Channel 5

T=Channel 6

Reference Polarization:

V

R

T

Azi. (deg.)

0

0

270

Vert. (deg.)

0

90

90

Date: 12 AUG 94

High Cut: 1200

Low Cut: 8

Sample Int.: .0002

Number of Samples: 2500

Location: Div. Dam RDH(CA)-6

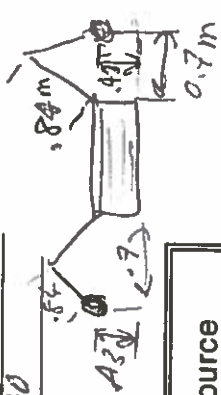
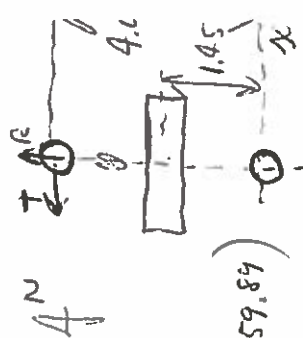
Instrument: max sensitivity

Shot		Borehole Geophone			Source 859.52			Source Polarization	
Rec	File	Depth	Elev.	Offset	Azimuth	Elev.	X	Y	Vertical
1	VDm0001	17.5	[860.26 - (0.37 + depth)]				0	1.45	90
2	VDm0002	17.5	[859.89 - depth]			859.62	0	1.45	90
3	VDm0003	17.0				[-27 + 859.89]	0	1.45	90
4	VDm0004	17.0					0	1.45	90
5	VDm0005	16.5					0	1.45	90
6	VDm0006	16.5					0	1.45	90
7	VDm0007	16.0					0	1.45	90
8	VDm0008	16.0					0	1.45	90
9	VDm0009	15.5					0	1.45	90
10	VDm0010	15.5					0	1.45	90

Note: +.37m add to depth to get ref. to clamp.

H2O Table 13.7 meters

Strong Winey



# BSU GEOPHYSICS VSP OBSERVER'S LOG

Coordinate System Origin at Borehole  
 Casing Elevation: 860.26 m Above SL  
 Azimuth of X-Axis 90°  
 Azimuth of Y-Axis 0° = North

Reference Phone: Offset \_\_\_\_\_  
 Azimuth \_\_\_\_\_  
 Elev. 859.52  
 X= 0  
 Y= +4.0

Channel Configuration:  
 Borehole Phone  
 V=Channel 1  
 R=Channel 2  
 T=Channel 3

Reference Polarization: Azi.(deg.) Vert.(deg.)  
 V 0 0  
 R 0 90  
 T 270 90

Date: 12 AUG Location: W. Dam BDTA-6  
 High Cut 1000 Low Cut 8 Sample Int. .0002 Number of Samples 2500

Shot		Borehole Geophone			Source					Source Polarization	
Rec	File	Depth	Elev.	Offset	Azimuth	Elev.	X	Y	Azimuth	Vertical	
11	VDm00011	15.0				859.62	0	+1.45	90	90	
12	VDm00012	15.0					0	+1.95	270	90	
13	VDm00013	14.5					0	1.45	90	90	
14	VDm00014	14.5					0	1.45	270	90	
15	VDm00015	14.0					0	1.45	90	90	
16	VDm00016	14.0					0	1.45	270	90	
17	VDm00017	13.5					0	1.45	90	90	
18	VDm00018	13.5					0	1.45	270	90	
19	VDm00019	13.0					0	1.45	90	90	
20	VDm00020	13.0					0	1.45	270	90	

# BSU GEOPHYSICS VSP OBSERVER'S LOG


Coordinate System Origin at Borehole above  
 Casing Elevation: 860.26 m sea level  
 Azimuth of X-Axis 90°  
 Azimuth of Y-Axis 0° = North

Reference Phone: Offset  
 Azimuth  
 Elev. 859.52  
 X= 0  
 Y= +4.0

Channel Configuration:  
 Borehole Phone  
 V=Channel 1  
 R=Channel 2  
 T=Channel 3

Reference Polarization: Azi.(deg.) Vert.(deg.)  
 V 0 0  
 R 0 90  
 T 270 90

Date: 12 AUG 94 Location: Div Dam RDHA-6  
 High Cut 1200 Low Cut 8 Sample Int. 1000 Number of Samples 2500

Shot		Borehole Geophone		Source					Source Polarization	
Rec	File	Depth	Elev.	Offset	Azimuth	Elev.	X	Y	Azimuth	Vertical
21	VDm00021	12.5				859.62	0	1.45	90	90
22	VDm00022	12.5					0	1.45	270	90
23	VDm00023	12.0					0	1.45	90	90
24	VDm00024	12.0					0	1.45	270	90
25	VDm00025	11.5					0	1.45	90	90
26	VDm00026	11.5					0	1.45	270	90
27	VDm00027	11.0					0	1.45	90	90
28	VDm00028	11.0					0	1.45	270	90
29	VDm00029	<del>10.5</del>					0	1.45	90	90
30	VDm00030	10.5					0	1.45	270	90

# BSU GEOPHYSICS VSP OBSERVER'S LOG

Coordinate System Origin at Borehole

Casing Elevation: 860.26 m Above S.L.

Azimuth of X-Axis 90°

Azimuth of Y-Axis 0° = North

Reference Phone: Offset

Azimuth

Elev. 859.52

X= 0

Y= +4.0

Channel

Borehole Phone

Reference Phone

Configuration:

V=Channel 1

V=Channel 4

R=Channel 2

R=Channel 5

T=Channel 3

T=Channel 6

Reference Polarization: Azi.(deg.)

V

0

R

0

T

270

Vert.(deg.)

0

90

90

Date: 12 AUG-94 Location: DIV. Dam RDHA-G

High Cut 1000 Low Cut 8 Sample Int. 0.002 Number of Samples 2500

Shot		Borehole Geophone			Source				Source Polarization	
Rec	File	Depth	Elev.	Offset	Azimuth	Elev.	X	Y	Azimuth	Vertical
31	VDm0031	10.0				859.62	0	1.45	90	90
32	VDm0032	10.0					0	1.45	270	90
33	VDm0033	9.5					0	1.45	90	90
34	VDm0034	9.5					0	1.45	270	90
35	VDm0035	9.0					0	1.45	90	90
36	VDm0036	9.0					0	1.45	270	90
37	VDm0037	8.5					0	1.45	50	90
38	VDm0038	8.5					0	1.45	270	90
39	VDm0039	8.0					0	1.45	90	90
40	VDm0040	8.0					0	1.45	270	90

Page 4

# BSU GEOPHYSICS VSP OBSERVER'S LOG

Coordinate System Origin at Borehole

Casing Elevation: 860.26 m Above S.L.

Azimuth of X-Axis 90°

Azimuth of Y-Axis 0° = North

Reference Phone: Offset

Azimuth

Elev. 859.52

X= 0

Y= +4.0

Channel

Borehole Phone

Reference Phone

Configuration:

V=Channel 1

V=Channel 4

R=Channel 2

R=Channel 5

T=Channel 3

T=Channel 6

Reference Polarization: Azi.(deg.)

V 6

R 0

T 270

Vert.(deg.)

0

90

90

Date: 12/06/99 Location: Div Dam RDHA - C

High Cut 1000 Low Cut 8 Sample Int. .0002 Number of Samples 2500

Shot		Borehole Geophone			Source			Source Polarization		
Rec	File	Depth	Elev.	Offset	Azimuth	Elev.	X	Y	Azimuth	Vertical
41	VDmccu41	7.5				859.62	0	1.45	90	90
42	VDmccu42	7.5					0	1.45	270	90
43	VDmccu43	7.0					0	1.45	90	90
44	VDmccu44	7.0					0	1.45	270	90
45	VDmccu45	6.5					0	1.45	90	90
46	VDmccu46	6.5					0	1.45	270	90
47	VDmccu47	6.0					0	1.45	90	90
48	VDmccu48	6.0					0	1.45	270	90
49	VDmccu49	5.5					0	1.45	90	90
50	VDmccu50	5.5					0	1.45	270	90

# BSU GEOPHYSICS VSP OBSERVER'S LOG

Coordinate System Origin at Borehole  
 Casing Elevation: 86226 in Above S.L.  
 Azimuth of X-Axis 90°  
 Azimuth of Y-Axis 0° = North

Reference Phone: Offset  
 Azimuth  
 Elev. 859.52  
 X= 0  
 Y= +4.0

Channel Borehole Phone Reference Phone  
 Configuration: V=Channel 1 V=Channel 4  
 R=Channel 2 R=Channel 5  
 T=Channel 3 T=Channel 6

Reference Polarization: Azi.(deg.) Vert.(deg.)  
 V 0 0  
 R 0 90  
 T 270 90

Date: 12 AUG 94 Location: D.V. Dam  
 High Cut 1000 Low Cut 8 Sample Int. 1002 Number of Samples 2500

Shot		Borehole Geophone			Source				Source Polarization	
Rec	File	Depth	Elev.	Offset	Azimuth	Elev.	X	Y	Azimuth	Vertical
51	VDmaw51	5.0				859.62	0	1.45	90	90
52	VDmaw52	5.0					0	1.45	270	90
53	VDmaw53	4.5					0	1.45	90	90
54	VDmaw54	4.5					0	1.45	270	90
55	VDmaw55	4.0					0	1.45	90	90
56	VDmaw56	4.0					0	1.45	270	90
57	VDmaw57	3.5					0	1.45	90	90
58	VDmaw58	3.5					0	1.45	270	90
59	VDmaw59	3.0					C	1.45	90	90
60	VDmaw60	3.0				V	0	1.45	270	90

# BSU GEOPHYSICS VSP OBSERVER'S LOG

Coordinate System Origin at Borehole  
 Casing Elevation: 860.26 m  
 Azimuth of X-Axis 90°  
 Azimuth of Y-Axis 0° North

Reference Phone: Offset \_\_\_\_\_  
 Azimuth \_\_\_\_\_  
 Elev. 859.52  
 X= 0  
 Y= +4.0

Channel Configuration:  
 Borehole Phone  
 V=Channel 1  
 R=Channel 2  
 T=Channel 3

Reference Polarization: Azi.(deg.) Vert.(deg.)  
 V 0 0  
 R 0 90  
 T 270 90

Date: 12 AUG 94 Location: Div. Dam RD#A-6  
 High Cut 1000 Low Cut 8 Sample Int. 0.002 Number of Samples 2500

Shot		Borehole Geophone		Source				Source Polarization	
Rec	File	Depth	Elev.	Offset	Azimuth	Elev.	X	Y	Vertical
61	VDmaw61	2.50				859.62	0	1.45	90
62	VDmaw62	2.5					0	1.45	270
63	VDmaw63	2.0					0	1.45	90
64	VDmaw64	2.0					0	1.45	270
65	VDmaw65	1.5					0	1.45	90
66	VDmaw66	1.5					0	1.45	270
67	VDmaw67	1.0					0	1.45	90
68	VDmaw68	1.0					0	1.45	270
69	VDmaw69	0.5					0	1.45	90
70	VDmaw70	0.5					0	1.45	270

North  
4

0-8m/1

0-8m/1

Coordinate System Origin at Borehole  
Casing Elevation: 860.26  
Azimuth of X-Axis 90°  
Azimuth of Y-Axis 0° = North

Reference Phone: \_\_\_\_\_

Offset \_\_\_\_\_

Azimuth \_\_\_\_\_

Elev. 859.52

X = 0

Y = +4.0

Channel	Borehole Phone	Reference Phone
Configuration:	V=Channel <u>1</u>	V=Channel <u>4</u>
	R=Channel <u>2</u>	R=Channel <u>5</u>
	T=Channel <u>3</u>	T=Channel <u>6</u>

Reference Polarization:	Azi.(deg.)	Vert.(deg.)
V	0	0
R	0	90
T	270	90

Date: 12 AUG 94 Location: Du Dam BDHA-6  
High Cut 1000 Low Cut 8 Sample Int. 0000

High Cut 7000 Low Cut 8 Sample Int. .0002 Number of Samples 2500

[illegible]

25

North  
A  
~~B~~ 200° 42'  
R  
10:13



# DOWN HOLE GEOPHONE FIELD CHECKLIST

DATE: 12 AUG 94

ODOMETER START: 54672 FINISH: 54688 10:55

## ITEMS AT GEOSCIENCES

ITEM	OUT	IN	COMMENT
SWC TOOL	✓	✓	
REF PHONE AND CABLES	✓	✓	
BISON	✓	✓	
TAPE MEASURE (50M)	✓	✓	
PULLEY AND WINCH ASSEM.	✓	✓	
DUMMY SWC TOOL	✓	✓	
SLEDGE HAMMER	✓	✓✓	
COMPASS	✓	✓	
ROCK HAMMER	✓	✓	
ROPE	✓	✓	
WD-40	✓	✓	
OBSERVER SHEETS/ MAPS	✓	✓	
GAS CARD/ KEYS	✓	✓	
GLOVES	✓	✓	

## ITEMS AT LINCOLN STREET

ITEM	OUT	IN	COMMENT
BISON CABLE BOX	✓	✓	
BISON TOOL BOX	✓	✓	
TOOL BOX	✓	✓	Need more Bison Paper
TRIGGER CORD	✓	✓	
TRIPOD HEAD	✓	✓	
BATTERIES (2)	✓✓	✓✓	

## LOCATED IN GARAGE

TRIPOD LEGS	✓✓✓	✓✓✓	
RAIL ROAD TIE	✓✓	✓✓	
SHOVEL	✓	✓	
PICK	✓	✓	
2 FT IRON ROD	✓✓	✓✓	

